

Niger Delta Weekly Conflict Update

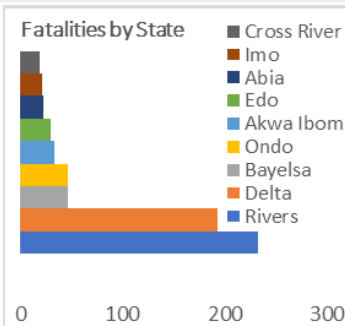
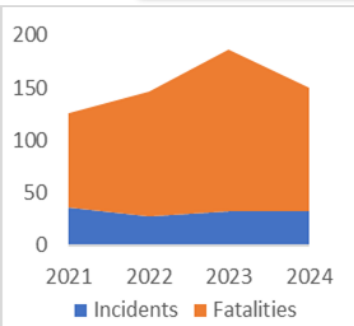
Enhancing Community Resilience Through Better Disaster Response in the Niger Delta

November 23-29, 2025

This update highlights recent disaster-related incidents in the Niger Delta, including flooding, fire outbreaks, and building collapses. These events reveal weak infrastructure, inadequate emergency preparedness, and limited public safety awareness. Addressing these gaps is key to enhancing community resilience and disaster response.



Trends and Dynamics of Disaster-Related Incidents in the Niger Delta

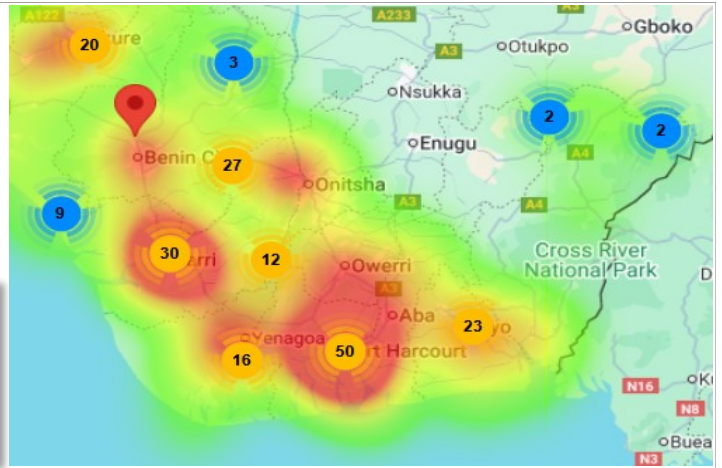


Anticipated Trends and Dynamics

Disaster risks in the region remain high due to heavy rainfall, unsafe settlements, and poor enforcement of regulations. With the coming Harmattan, fire hazards may rise, and without preventive measures, these incidents could further strain community response systems.

Actions Taken to Mitigate the Situation

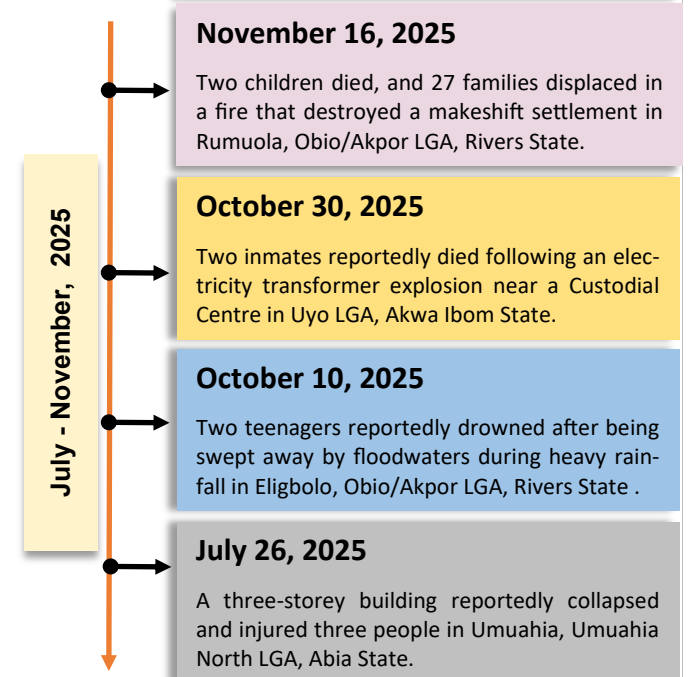
Emergency management agencies are monitoring high-risk areas and responding to disaster events, with communities supporting early reporting. Stronger preventive measures and awareness campaigns are needed to boost resilience and improve response systems.



Heat Map shows the concentration of reported disaster incidents in the Niger Delta from January 2021 to September 2025. Sources: All data sources formatted on PIND's P4P Peace Map www.p4pnigeraldelta.org



Timeline of Recent Disaster Events in the Niger Delta



Our Services: PIND's Integrated Peace and Development Unit (IPDU) provides technical support to stakeholders and implementing partners across the public and private sectors. With over 12 years of experience in peacebuilding, and conflict management, our in-house team of subject-matter experts, alongside a network of partners on the ground, delivers tailored support to national and international stakeholders. We specialize in peacebuilding, conflict early warning and response, conflict-sensitive development, research, and the production of data-driven conflict reports.

Contact Us

Inquiries: ✉ PINDfoundation.org

Contacts: 📞 info@PINDfoundation.org +234 (0) 9 291 0454

What do you think about the report? - [We value your feedback](#)

Report Incidents: IPDU Early Warning System

Please report any verified incident of conflict to the IPDU SMS early warning system: Text report to **0912 233 4455**.

Incident Details: Kindly include the State, LGA, Town, Date, and brief incident description.



FOUNDATION FOR PARTNERSHIP INITIATIVES IN THE NIGER DELTA



FOUNDATION FOR NIGER DELTA PARTNERSHIP INITIATIVE